

Autodesk Docs://HD-Charlottesville-VH-23-56-140-1AHD-Charlottesville-VH-23-56-140-1A.rvt 11/17/2023 4:58:03 PM

THE HOME DEPOT

CHARLOTTESVILLE, VA

FLOOR PLAN

11/16/2023



CHARLOTTESVILLE, VA

THE HOME DEPOT

2455 PACES FERRY ROAD, C-19
ATLANTA, GA 30339-4024
T: 770.433.8211

© MG2 Inc. All rights reserved. No part of this document may be reproduced in any form or by any means without permission in writing from MG2, Inc.

8444 Westpark Dr, Ste 120
McLean, VA 22102
703 564 8484
MG2.com



FLOOR PLAN

DD21-02

Autodesk Docs://HD-Charlottesville-VH-23-56140-1AHD-Charlottesville-VH-23-56140-1A.rvt

11/17/2023 4:58:17 PM

THE HOME DEPOT

CHARLOTTESVILLE, VA

FLOOR PLAN GARDEN CENTER

11/16/2023



CHARLOTTESVILLE, VA

THE HOME DEPOT

2455 PACES FERRY ROAD, C-19
ATLANTA, GA 30339-4024
T: 770.433.8211

© MG2 Inc. All rights reserved. No part of this document may be reproduced in any form or by any means without permission in writing from MG2, Inc.

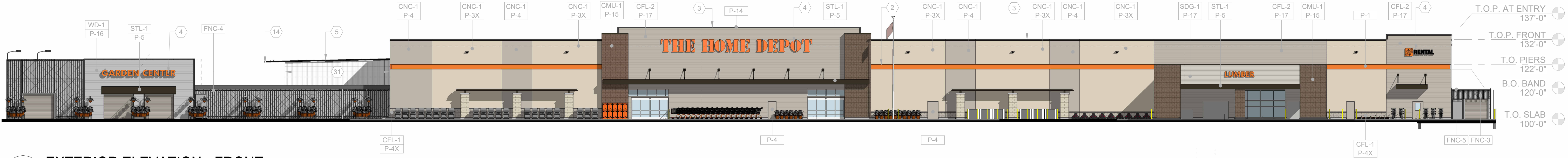
8444 Westpark Dr, Ste 120
McLean, VA 22102
703 564 8484
MG2.com



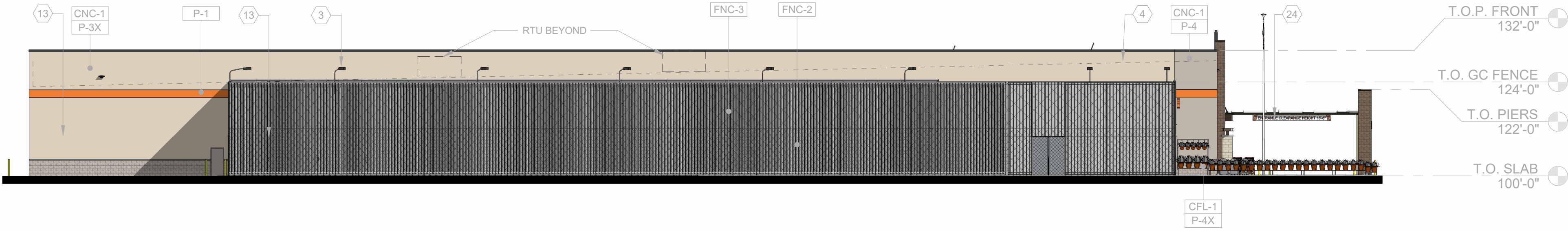
FLOOR PLAN GARDEN CENTER

DD21-03

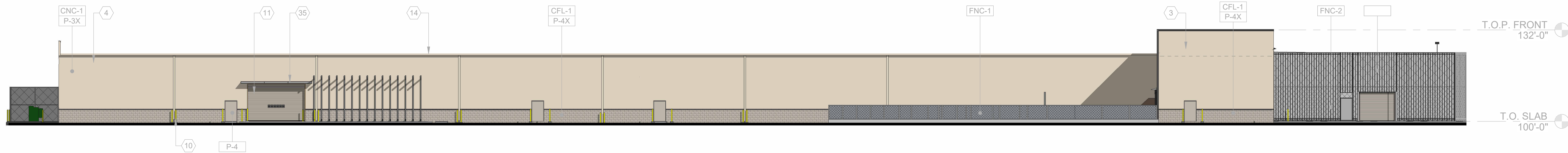
Autodesk Docs://HD-Charlottesville-VH-23-56140-1A/HD-Charlottesville-VH-23-56140-1A.rvt 11/17/2023 2:22:02 PM



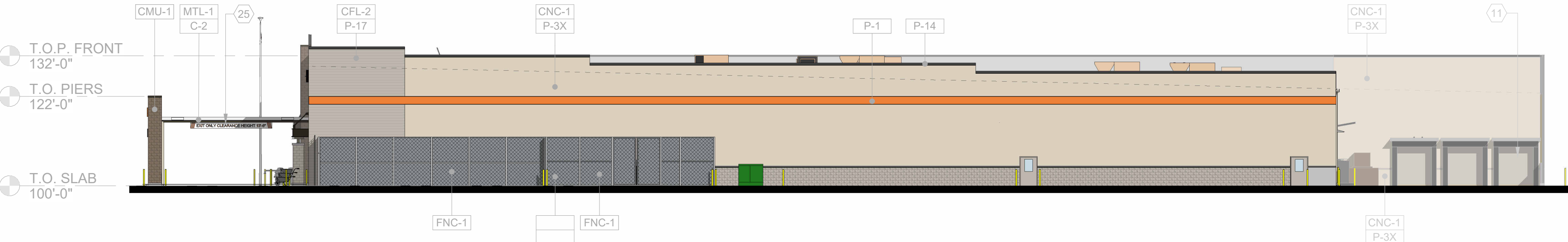
1 EXTERIOR ELEVATION - FRONT
SCALE: 1" = 20'-0"



2 EXTERIOR ELEVATION - GARDEN CENTER
SCALE: 1" = 20'-0"



3 EXTERIOR ELEVATION - REAR
SCALE: 1" = 20'-0"



4 EXTERIOR ELEVATION - TRC
SCALE: 1" = 20'-0"

COLOR PALETTE



COATING SCHEDULE	
MARK	DESCRIPTION
C-2	"SNOWDRIFT WHITE" (RAL 9003)
C-5	"DARK COOL GRAY" (RAL 7045)

MATERIAL SCHEDULE	
MARK	MATERIAL
CFL-1	FORMLINER ON CONCRETE TILT PANEL - FITZGERALD 16971LP 8"x16" SPLITFACED BLOCK (MODULAR)
CFL-2	FORMLINER ON CONCRETE TILT PANEL - SPEC FORMLINERS #1267 - 8" WOODGRAIN PLANK SHIP LAP
CMU-1	FORMLINER: SPLIT FACE MASONRY
CNC-1	CONCRETE TILT PANEL WITH SMOOTH FINISH
FNC-1	9 GA. x2" BLACK VINYL COATED CHAIN LINK FENCE
FNC-2	VERTICAL METAL FENCE WITH EXPANDED METAL MESH AND FABRIC MESH BEHIND. FENCE, MESH, AND FABRIC COLOR: BLACK
FNC-3	VERTICAL METAL FENCE WITH BLACK PAINTED OR POWDER COATED CHAIN LINK FENCE AND FABRIC MESH BEHIND. FENCE COLOR: BLACK
FNC-4	BLACK VERTICAL METAL FENCE WITH BLACK EXPANDED METAL MESH
FNC-5	BLACK VERTICAL METAL FENCE WITH BLACK PAINTED OR POWDER COATED CHAIN LINK FENCE
MTL-1	METAL ROOF PANELS
SDG-1	FIBER CEMENT SIDING - HARDIPLANK 8" LAP SIDING
STL-1	STRUCTURAL STEEL
WD-1	HORIZONTAL COMPOSITE WOOD SLATS

PAINT SCHEDULE		
MARK	COLOR	PAINT COLOR NAME AND NO.
P-1	HOMER BUCKET ORANGE	CUSTOM MATCH TBD
P-2	WHITE	"WHITE" 1852
P-3	SAWDUST	CUSTOM MATCH TBD
P-3X	SAWDUST - TEXTURED	CUSTOM MATCH TBD
P-4	FLY ASH	CUSTOM MATCH TBD
P-4X	FLY ASH - TEXTURED	CUSTOM MATCH TBD
P-5	TOP SOIL	CUSTOM MATCH TBD
P-8	TRAFFIC YELLOW	OSHA SAFETY YELLOW
P-9	RED	OSHA SAFETY RED
P-10	BLACK	"BLACK SUEDE" S-H-790
P-13	WHITE DRYFALL (ONLY AT EXPOSED EXTERIOR ROOF STRUCTURE)	"WHITE" HP210
P-14	DARK GREY	TBD
P-15	WICKER BASKET	PPG 1020-6
P-16	TBD	TBD
P-17	FLY ASH - ON SIDING	CUSTOM MATCH TBD

ELEVATION KEY NOTES	
MARK	DESCRIPTION
1	TYPICAL PANEL JOINT REFER TO 8/A3.01 DETAILS.
2	FLAGPOLE W/ TYING CLEAT AND FLAG CLIPS. EXPOSED POLE HEIGHT 40'-0".
3	PREFINISHED METAL COPING CAP. MATCH COLOR INDICATED.
4	SIGNAGE, UNDER SEPARATE PERMIT.
5	PREFINISHED METAL ROOF PANELS, COLOR STANDARD WHITE
6	EXTERIOR ELECTRICAL ROOM.
7	HOLLOW METAL DOOR AND FRAME. PAINT EXTERIOR TO MATCH ADJACENT WALL COLOR.
8	DARK BRONZE ANODIZED ALUMINUM STOREFRONT WITH GLAZING PER ENERGY CALCULATIONS. REFER TO T-105 ENERGY CALCULATIONS.
9	FASCIA BY G.C.
10	BOLLARD - REFER TO BOLLARD PLAN.
11	OVERHEAD ROLLING DOOR. REFER TO DOOR SCHEDULE.
12	STEEL COLUMN. FINISH AS NOTED. REFER TO STRUCTURAL DRAWINGS.
13	FENCE. REFER TO MATERIAL SCHEDULE FOR TYPE.
14	PREFINISHED METAL GUTTER.
15	GARDEN CENTER LOW CANOPY AND SHADE SCREEN STRUCTURES BY GC.
16	PREFINISHED GALVANIZED METAL REGLET AND FLASHING SYSTEM.
17	BIKE RACK, GALVANIZED - MODEL #BRS, MANUFACTURED BY "HUNTCO", 1-800-547-5909. BOLT TO CONCRETE SLAB PER MANUFACTURERS RECOMMENDATIONS.
18	CONCRETE CART CURB. APPLIES TO ALL WALLS AND PILASTERS SUBJECT TO CART IMPACT.
19	WALL MOUNTED LIGHT FIXTURE. REFER TO ELECTRICAL.
20	GAS PIPING. PAINT TO MATCH ADJACENT SURFACE.
21	GAS METER. REFER TO PLUMBING DRAWINGS.
22	AUTO SLIDING DOOR. FINISHES TO MATCH STOREFRONT. REFER TO SPECIFICATIONS.
23	APPROXIMATE LINE OF TRUCK WELL BEYOND.
24	20'-0"x1'-6" SURFACE MOUNTED "ENTRANCE CLEARANCE HEIGHT 13'-6"" SIGN - UNDER SEPARATE PERMIT.
25	20'-0"x1'-6" SURFACE MOUNTED "EXIT ONLY CLEARANCE HEIGHT 13'-6"" SIGN - UNDER SEPARATE PERMIT.
26	PVC DOWNSPOUT WITH CAST IRON BOOT. REFER TO PLUMBING DRAWINGS FOR SIZE. PAINT TO MATCH WALL.
27	TRASH COMPACTOR (NOT IN CONTRACT).
28	COMPACTOR DOOR AND FRAME. PAINT EXTERIOR TO MATCH ADJACENT WALL COLOR.
29	DOCK DOOR SEALS.
30	DOCK LIGHTS CENTERED BETWEEN DOCK DOORS AND 3'-0" ABOVE DOOR OPENINGS.
31	TRANSLUCENT FIBERGLASS WALL PANELS AT RAIN SCREEN BY OTHERS.
32	TEMPORARY BANNER SIGN (NOT IN CONTRACT).
33	TRANSFORMER. REFER TO ELECTRICAL DRAWINGS.
34	CT CABINET. REFER TO ELECTRICAL DRAWINGS.
35	GALVANIZED METAL HOOD. REFER TO SECTIONS.
36	EMERGENCY LIGHT. MOUNT CENTERED ON BEAM ABOVE AUTOSLIDING DOOR. REFER TO ELECTRICAL.
37	KNOX BOX LOCATED AT 60" A.F.F., VERIFY LOCATION WITH LOCAL FIRE MARSHALL PRIOR TO INSTALLATION.
38	LINE OF ROOF BEYOND. REFER TO ARCHITECTURAL ROOF PLAN AND STRUCTURAL ROOF FRAMING PLAN.
39	LOADING DOCK FLOOD LIGHTING. REFER TO LIGHTING PLAN.
40	EXPOSED HIGH BUILDING STRUCTURAL STEEL, BAR JOISTS, AND COLUMNS AT GARDEN CENTER TO BE PAINTED.
41	PROPANE STORAGE CAGES BY OTHERS. VERIFY LOCATION WITH HOME DEPOT PROJECT MANAGER AND LOCAL FIRE MARSHAL.
42	WALL MOUNTED STEEL DOWNSPOUT GUARD WITH FACTORY YELLOW FINISH. MOUNT WITH BOTTOM EDGE 2" ABOVE SLAB. INCLUDE FRONT FACING OPENING IN GUARD SIZED FOR CLEAN-OUT. ATTACH TO WALL PER MANUFACTURER'S RECOMMENDATIONS. SEE DETAIL AND SPECIFICATION SECTION 055000.
43	DOCK SAFETY LIGHTS MOUNTED AT 96" ABOVE SLAB. REFER TO ELECTRICAL DRAWINGS.
44	WALL WASH LIGHT FIXTURE. REFER TO ELECTRICAL DRAWINGS.
45	FORMLINER V-GROOVE. SEE DETAIL FOR ADDITIONAL INFORMATION.

THE HOME DEPOT

CHARLOTTESVILLE, VA

EXTERIOR ELEVATIONS - RENDERED

11/16/2023



CHARLOTTESVILLE, VA

THE HOME DEPOT

2455 PACES FERRY ROAD, C-19
ATLANTA, GA 30339-4024
T: 770.433.8211

© MG2 Inc. All rights reserved. No part of this document may be reproduced in any form or by any means without permission in writing from MG2, Inc.

8444 Westpark Dr. Ste 120
McLean, VA 22102
703 564 8484
MG2.com

MG2

EXTERIOR ELEVATIONS
- RENDERED

DD31-02

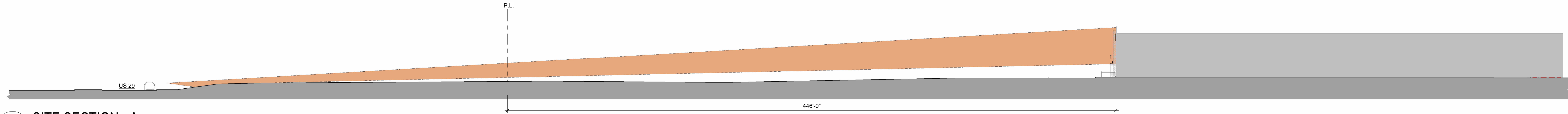
10/16/2023 3:36:53 PM Autodesk Docs://HD-Charlottesville-VH-23-56-140-1A/HD-Charlottesville-VH-23-56-140-1A.rvt

THE HOME DEPOT

CHARLOTTESVILLE, VA

1 SITE SECTION - A

SCALE: 1/32" = 1'-0"



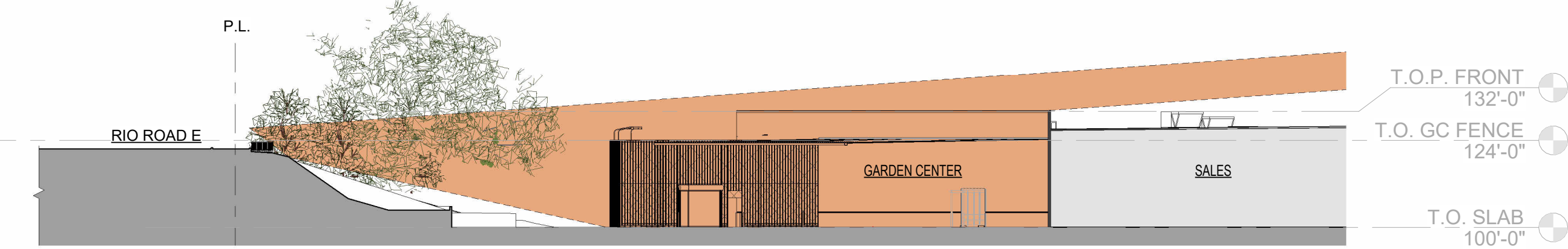
2 SITE SECTION - B

SCALE: 1/32" = 1'-0"



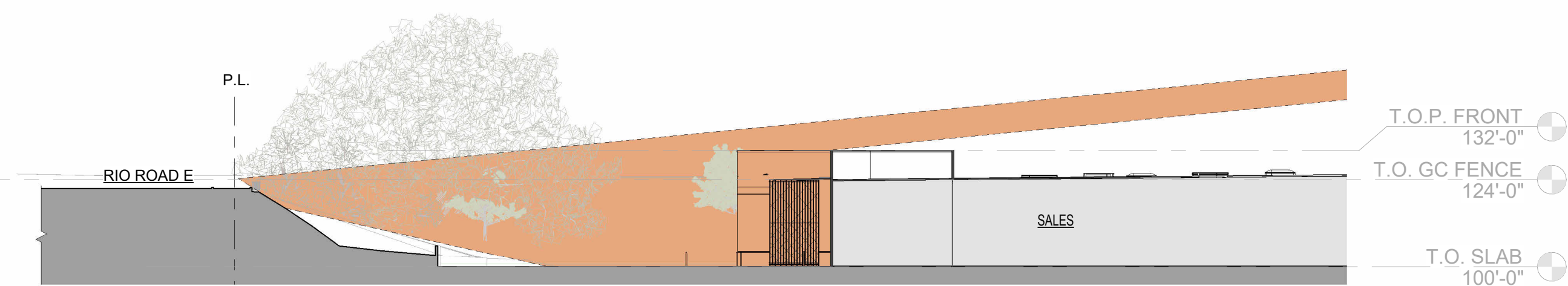
3 SITE SECTION - C

SCALE: 1/32" = 1'-0"



9 SITE SECTION - D

SCALE: 1/32" = 1'-0"



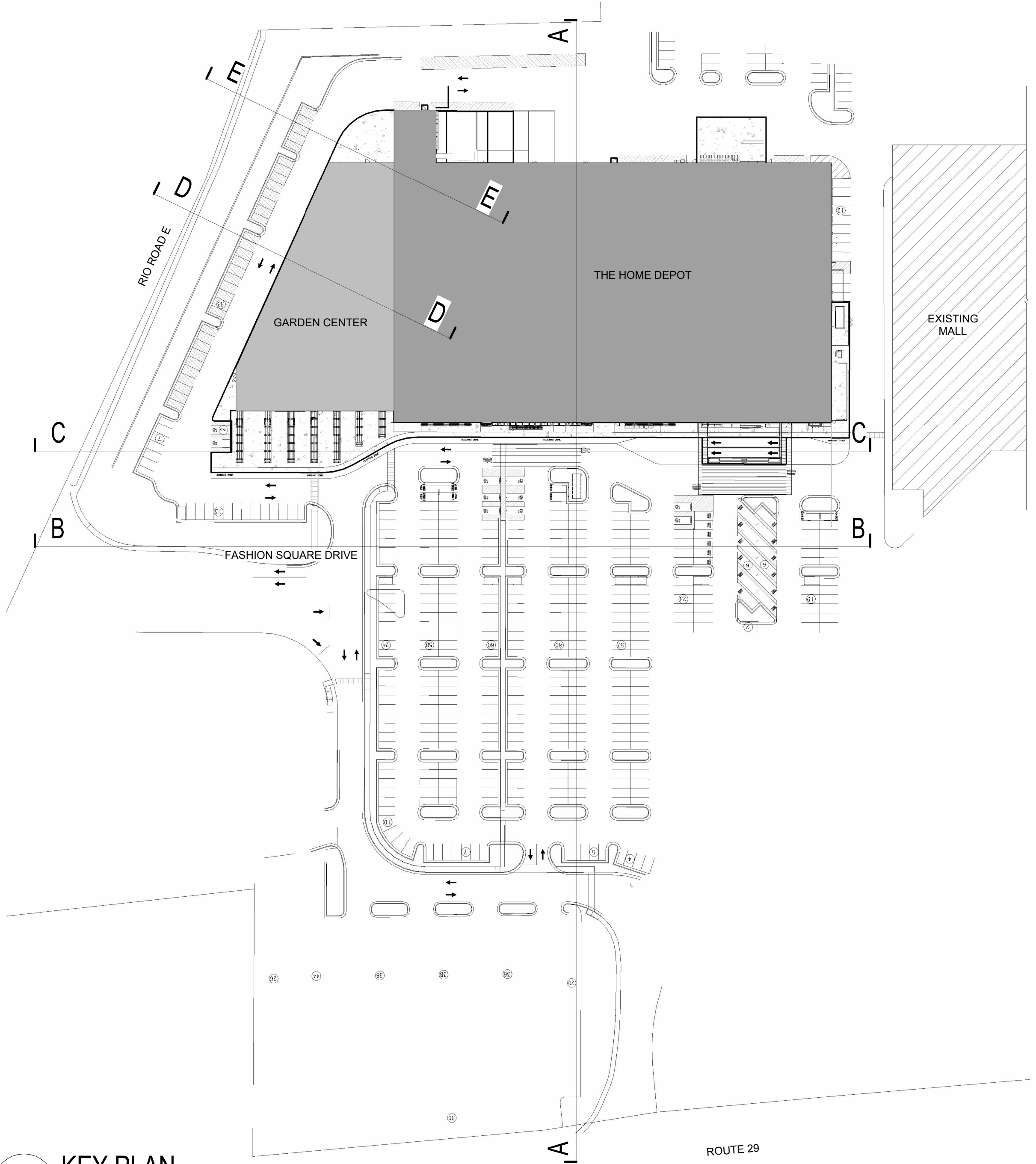
7 SITE SECTION - E

SCALE: 1/32" = 1'-0"



6 KEY PLAN

SCALE: 1" = 80'-0"



CHARLOTTESVILLE, VA

THE HOME DEPOT

2455 PACES FERRY ROAD, C-19
ATLANTA, GA 30339-4024
T: 770.433.8211

© MG2 Inc. All rights reserved. No part of this document may be reproduced in any form or by any means without permission in writing from MG2, Inc.

8444 Westpark Dr, Ste 120
McLean, VA 22102
703.564.8484
MG2.com

MG2

HDPCR0701

SITE SECTIONS

DD31-03

11/16/2023

10/16/2023 3:37:10 PM AutodesK Docs://HD-Charlottesville-VH-23-56-140-1A/HD-Charlottesville-VH-23-56-140-1A.rvt



1 RIO ROAD EXTERIOR VIEW A WITH EXISTING LANDSCAPING ONLY
SCALE: 3/4" = 1'-0"



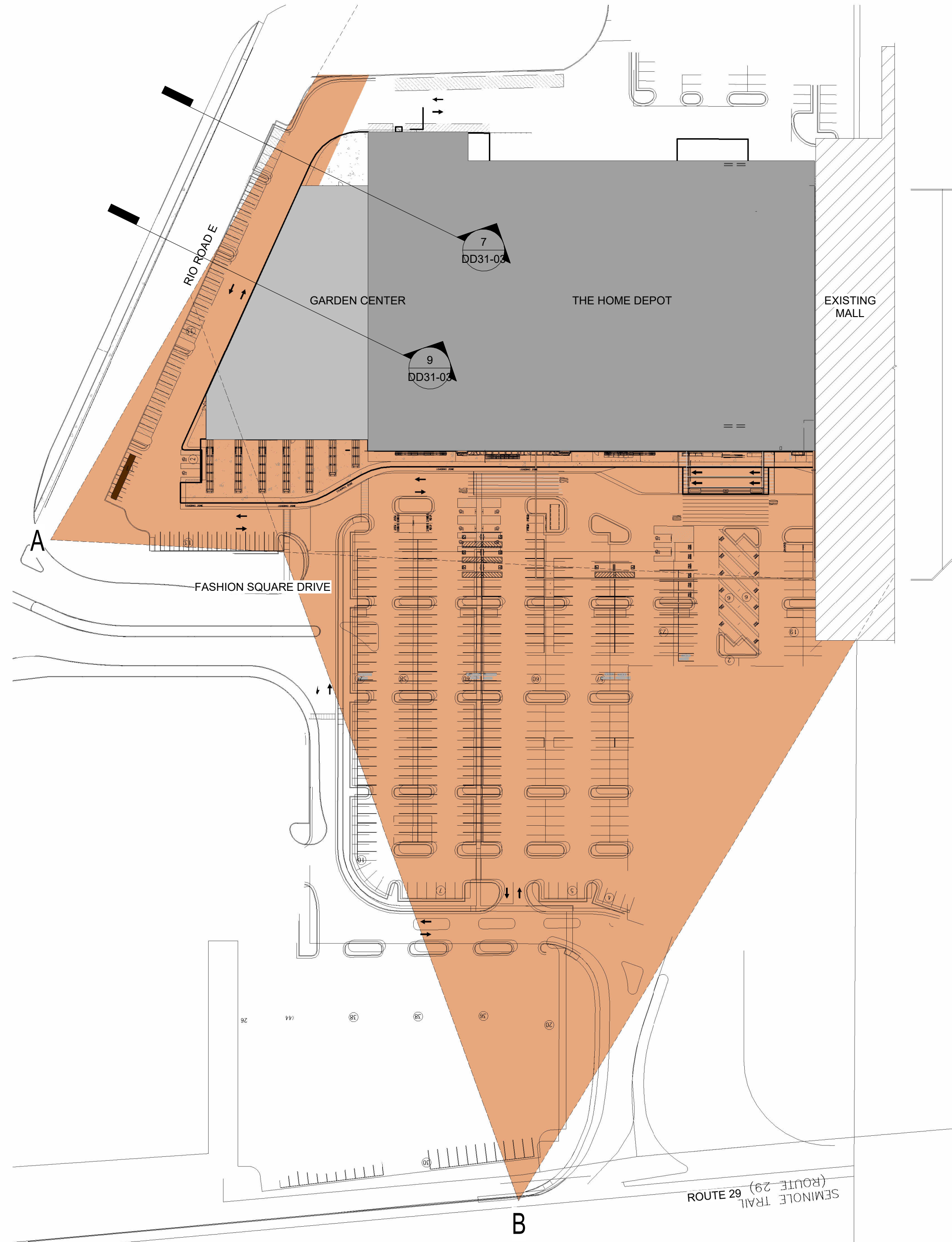
2 RIO ROAD EXTERIOR VIEW A WITH PROPOSED LANDSCAPING
SCALE: 3/4" = 1'-0"



3 ROUTE 29 EXTERIOR VIEW B WITH EXISTING LANDSCAPING ONLY
SCALE: 3/4" = 1'-0"



4 ROUTE 29 EXTERIOR VIEW B WITH PROPOSED LANDSCAPING
SCALE: 3/4" = 1'-0"



5 KEY PLAN
SCALE: 1" = 80'-0"

THE HOME DEPOT

CHARLOTTESVILLE, VA

EXTERIOR VIEWS

11/16/2023



CHARLOTTESVILLE, VA

THE HOME DEPOT

2455 PACES FERRY ROAD, C-19
ATLANTA, GA 30339-4024
T: 770.433.8211

© MG2 Inc. All rights reserved. No part of this document may be reproduced in any form or by any means without permission in writing from MG2, Inc.

8444 Westpark Dr, Ste 120
McLean, VA 22102
703.564.8484
MG2.com

MG2

HDPCR0701


EXTERIOR VIEWS

DD31-04


ORION | ISON™ AREA LIGHT HIGH PERFORMANCE, GEN 1

IAHP1

Applications
The ISON IAHP1 industry leading lumen per watt performance maximizes energy savings and leads to the lowest total cost of ownership for exterior lighting. The ISON Area Light High Performance provides uniform distribution for area and site lighting in retail, commercial, and residential applications including driveways and parking areas. Replaces up to 1000W HD industrial fixtures.



Project Name:
Catalog Number:
Type:
Note:
Date:



Construction & Design

- Type III, IV, and Type V light distributions
- 13,000 to 63,000 lumens
- Precision engineered lens made of optical grade polycarbonate for maximum light intensity
- Tool-less access to electrical components for field maintenance and installation
- Eight lumen packages offered across three fixture sizes
- Anti-corrosion stainless steel hardware
- Heavy duty one piece die-cast aluminum housing with external heatsink for optimal thermal management
- Fixture comes standard in bronze. Black and white fixture housing available

Electrical

- Available in 120v-277v and 277v-480v
- Factory-wired for full dimming (0-10v)
- 10kV/5kA Surge Protection standard. 20kV/10kA surge protection available
- Optional 12v DC auxiliary power provided with 7-pin NEMA receptacle
- Power Factor > .90*
- Total Harmonic Distortion < 20%*

Note: Varies based on option

Control and Sensor Options

- Factory installed 7-pin photocell receptacle for filed installation of photocell
- Photo control and occupancy sensor options
- Field or factory installed control and sensor options
- Remote Programming Sensors
- Onsite Network Programming Controls
- Internet Cloud Based Network Programming Controls

Fixture Certification & Listings

- UL/cUL Listed for Wet Locations
- RoHS Compliant Components
- IK10 Impact Rating
- Fixture is IP67 Rated
- Fixture with Sensor is IP65 Rated
- 3.0 G Vibration load rating per ANSI C136.31
- Dark Sky Approved. 3000K CCT with fixed mounts only
- Title 24 Complacency when using optional sensor
- DesignLights Consortium premium qualified product
- Visit the [DLC DEL](#) for listed models

Warranty

See Orion's [Product Limited Warranty](#) for more details and information

Lumen Maintenance

See Lumen Maintenance Table on page 2

ORION | ISON™ AREA LIGHT HIGH PERFORMANCE, GEN 1

Performance Information, 277v, ≥80 CRI, 4000K¹

Nominal Lumen Code	Type V				Type IV				Type III				Input Current
	Actual Lumens	Wattage	LPW	BUG Rating	Actual Lumens	Wattage	LPW	BUG Rating	Actual Lumens	Wattage	LPW	BUG Rating	
A1	12,630lm	76w	165	B4-U0-G2	12,522lm	76w	159	B3-U0-G2	12,567lm	76w	165	B3-U0-G2	0.27A
B1	18,252lm	116w	156	B4-U0-G2	17,588lm	116w	158	B3-U0-G3	18,790lm	116w	164	B3-U0-G3	0.40A
C1	22,186lm	139w	160	B5-U0-G3	21,294lm	139w	153	B3-U0-G3	22,111lm	139w	159	B3-U0-G3	0.50A
D1	29,594lm	176w	168	B5-U0-G4	28,329lm	176w	161	B3-U0-G4	29,494lm	176w	167	B4-U0-G3	0.63A
E1	32,875lm	172w	172	B5-U0-G4	31,554lm	179w	165	B3-U0-G4	32,765lm	179w	171	B4-U0-G4	0.69A
F1	37,295lm	227w	165	B5-U0-G4	35,723lm	227w	162	B4-U0-G4	37,054lm	227w	168	B4-U0-G4	0.80A
G1	49,402lm	288w	171	B5-U0-G5	47,416lm	288w	164	B4-U0-G5	49,236lm	288w	171	B4-U0-G4	1.04A
H1	64,890lm	400w	162	B5-U0-G5	62,289lm	400w	156	B4-U0-G5	64,677lm	400w	162	B4-U0-G5	1.45A

Lumen Maintenance²

Series	Nominal Lumen Code	Nominal Lumens	Operating Temperature	Calculated Lumen Maintenance		
				L70	L80	L90
IAHP1	A1	13,000	25°C	153,000	95,000	45,000
			50°C	153,000	95,000	45,000
			50°C	153,000	95,000	45,000
IAHP1	B1	19,000	25°C	153,000	95,000	45,000
			50°C	153,000	95,000	45,000
			50°C	150,000	95,000	45,000
IAHP1	C1	23,000	25°C	135,000	85,000	40,000
			50°C	150,000	95,000	45,000
			50°C	150,000	95,000	45,000
IAHP1	D1	31,000	25°C	153,000	95,000	45,000
			50°C	153,000	95,000	45,000
			50°C	153,000	95,000	45,000
IAHP1	E1	34,000	25°C	153,000	95,000	45,000
			50°C	153,000	95,000	45,000
			50°C	153,000	95,000	45,000
IAHP1	F1	38,000	25°C	153,000	97,000	45,000
			50°C	148,000	93,000	45,000
			50°C	153,000	97,000	45,000
IAHP1	G1	48,000	25°C	127,000	80,000	38,000
			50°C	127,000	80,000	38,000
			50°C	153,000	96,000	45,000
IAHP1	H1	63,000	25°C	153,000	96,000	45,000
			45°C	120,000	75,000	40,000

Additional Specification Information

¹ Actual performance may vary by up to ±10% of values shown. Factory fixture and fixture options can affect performance values.

² Calculated lumens based on TM-21 projections and components used at the time of lumens. Warranty is not associated with Calculated Lumens Maintenance.

800.660.9340 | [orionlighting.com](#)


© 2017 Orion Energy Systems, Inc. All rights reserved. The Orion logo, ISON™, AHP1™, HHP1™, and IAHHP1™ product names are registered trademarks of Orion Energy Systems. All other trademarks are the property of their respective owners.


ORION | ISON™ AREA LIGHT HIGH PERFORMANCE, GEN 1


IAHP1

Fixture Dimensions and Physical Information

Lumen Code	Length	Height	Width	Weight	EPA (side @ 0°)
A1/B1/C1	16.50"	2.20"	10.60"	9.00 lbs.	32 ft ²
D1/E1/F1	20.30"	2.20"	13.70"	13.00 lbs.	36 ft ²
G1/H1	23.00"	3.00"	14.10"	22.00 lbs.	50 ft ²







Ambient Operating Temperature Range

Lumen Code	Standard Operating Ambient Temperature Range
A1/B1/C1/D1/E1/F1/G1	-40°C to 50°C (-40°F to 122°F)
H1	-40°C to 45°C (-40°F to 113°F)

Sensor Type	Operating Temperature Range
ETx	-39°C to 50°C (-37°F to 122°F)
WBox	-40°C to 50°C (-40°F to 122°F)

Additional Specification Information

¹ Weight may vary based on option selection.

© 2017 Orion Energy Systems, Inc. All rights reserved. The Orion logo, ISON™, AHP1™, HHP1™, and IAHHP1™ product names are registered trademarks of Orion Energy Systems. All other trademarks are the property of their respective owners.

800.660.9340 | [orionlighting.com](#)

© 2017 Orion Energy Systems, Inc. All rights reserved. The Orion logo, ISON™, AHP1™, HHP1™, and IAHHP1™ product names are registered trademarks of Orion Energy Systems. All other trademarks are the property of their respective owners.

ORION | ISON™ AREA LIGHT HIGH PERFORMANCE, GEN 1

IAHP1

Ordering Information Example (NOTE: No dashes or spaces unless noted below)

IAHP1C1UNVFD850BRTS-SP

Ordering Information (Enter Selected Catalog Number Below)

Series	Nominal Lumen Code	Voltage	Driver Type	CRI/ Color Temp	Fixture Color	Light Distribution	Fixture Options*	Factory Installed Control Options	Packaging
IAHP1-ISON LED Area Light High Performance, Gen 1	A1-13,000lm B1-19,000lm C1-23,000lm D1-31,000lm E1-34,000lm F1-38,000lm G1-48,000lm H1-63,000lm	UNV-120v-277v HNV-277v-480v	FD- Full Dimming	830-80CRI, 3000K 840-80CRI, 4000K 850-80CRI, 5000K	BR- Bronze BL- Black WH- White ²	T3- Type III T4- Type IV T5- Type V	(Blank)- No Control TS2- 20kV/10kA Surge Protection 7R01- 5-30° Pin Universal NEMA Receptacle ³ 7R02- 7 Pin NEMA Receptacle (with 5v power source) ³	(See below for part numbers and descriptions) SP- Single Pack	

Note: Universal NEMA 7-pin receptacle used. See Page 5 for photocell options.

Sensor and Controls Ordering Information

Factory Installed Control Options

(Blank)- No Control Options

IP65 Rated

WBox- PIR, Occupancy Sensor, HGA/LDN/OFF, 0-10V Dimming, Switching Photocell, Bluetooth, Mobile App Programmable, 360°¹ & 180°

IP65 Rated

ETx- Empowered Connected Lighting Sensor, Network Lighting Control Components, PIR, Occupancy Sensor, Daylight Harvesting, High End Trim, Dimming Modes, Luminaire Level Lighting Control, Wireless Zones, Modified IEEE 802.15.4, BLE Radio, Temperature Sensor, Scene Control, Demand Response, Data Collection, BMS Integration, Cloud Access¹ & 2

ETx- Empowered iot: All Features of ETx2 - PLUS access to Apps: Space Management, Asset Tracking, and Contact Tracing Apps¹ & 2

Note: For iot cloud based and network systems See Page 5.

Additional Specification Information

¹ For actual lumens, see performance table.

² For more information about these options go to our [website](#).

³ WBox and ETx cannot be used with 7R01 and 7R02 receptacles. WBox and ETx have photocell capabilities.

Note: H1 and B1 lumen packages are not compatible with WBox or ETx sensor options.

Note: Special order option, lead times vary.


800.660.9340 | [orionlighting.com](#)

© 2017 Orion Energy Systems, Inc. All rights reserved. The Orion logo, ISON™, AHP1™, HHP1™, and IAHHP1™ product names are registered trademarks of Orion Energy Systems. All other trademarks are the property of their respective owners.

ORION | ISON™ AREA LIGHT HIGH PERFORMANCE, GEN 1

IAHP1

Fixture Options (Factory Installed)



Accessories (Sold Separately - Field Installed)

Mounting Options	Control Options*
EXT-IAHP-SPT-001 Bronze Slip-Fit, 2-3/8" Torus	EXT-IAHP-PES-001 Twist-Lock Photocell On/Off Daylight Sensing Only, 120-277v
EXT-IAHP-PES-001 Bronze Yoke Mount, A1/B1/C1	EXT-IAHP-PES-002 Twist-Lock Photocell On/Off Daylight Sensing Only, 347v
EXT-IAHP-VHM-001 Bronze Yoke Mount, D1/E1/F1	EXT-IAHP-SWC-001 Shorting Cap
EXT-IAHP-VHM-001 Bronze Yoke Mount, G1/H1	
EXT-IAHP-TRM-001 Bronze Trunion Mount, 5.5" Square Pole	
EXT-IAHP-ADM-001 Bronze Adjustable Arm, 4" Square Pole	
EXT-IAHP-ADM-001 Bronze Universal Pole Mount 3" Square or 4" Round Pole Kit	
EXT-IAHP-UPM-001 Bronze Universal Pole Mount 3" Square or 5" Round Pole Kit	
EXT-IAHP-UPM-001 Bronze Universal Pole Mount 3" Square or 6" Round Pole Kit	
EXT-IAHP-SLM-001 Bronze Side and Lock, 3" Square or 3-1/4" Round Pole	
EXT-IAHP-WMA-001 Bronze Adjustable Wall Mount Arm Kit	

Light Shield Options
EXT-IAHP-BLS-001 Bronze Back Light Shield, Small, A1/B1/C1
EXT-IAHP-BLS-001 Bronze Back and Sides Light Shields, Small, A1/B1/C1
EXT-IAHP-BLS-001 Bronze Back Light Shield, Medium, D1/E1/F1
EXT-IAHP-BLS-001 Bronze Back and Sides Light Shields, Medium, D1/E1/F1
EXT-IAHP-BLS-001 Bronze Back Light Shield, Large, G1/H1
EXT-IAHP-BLS-001 Bronze Back and Sides Light Shields, Large, G1/H1

Note: To order a fixture bracket or Light Shield in Black change "001" to "002" or for White change "001" to "003". Examples: EXT-IAHP-SPT-002

Additional Specification Information

¹ Special order option, lead times vary.

800.660.9340 | [orionlighting.com](#)


© 2017 Orion Energy Systems, Inc. All rights reserved. The Orion logo, ISON™, AHP1™, HHP1™, and IAHHP1™ product names are registered trademarks of Orion Energy Systems. All other trademarks are the property of their respective owners.


ORION | ISON™ AREA LIGHT HIGH PERFORMANCE, GEN 1


IAHP1

Accessories (Field Installed)













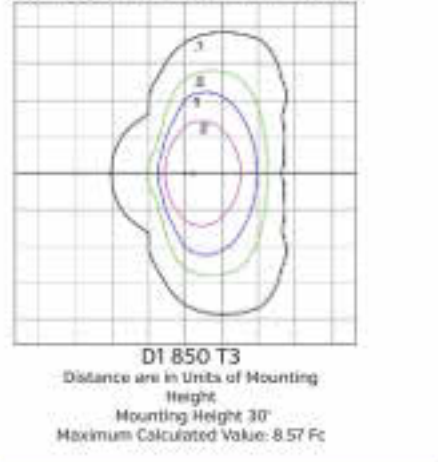


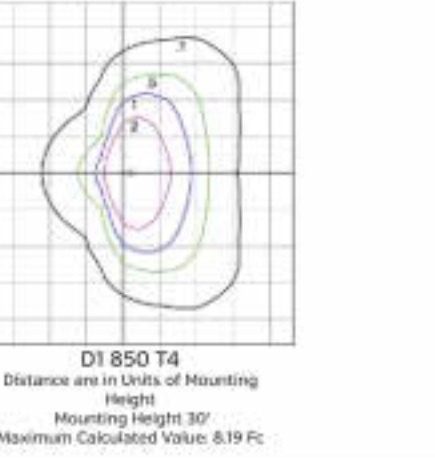


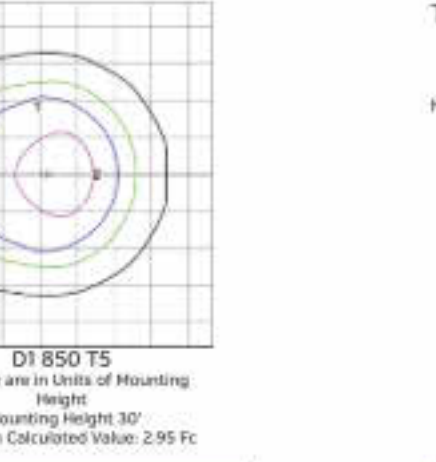




ISO FOOTCANDLE PLOTS







800.660.9340 | [orionlighting.com](#)

© 2017 Orion Energy Systems, Inc. All rights reserved. The Orion logo, ISON™, AHP1™, HHP1™, and IAHHP1™ product names are registered trademarks of Orion Energy Systems. All other trademarks are the property of their respective owners.

ORION | ISON™ AREA LIGHT HIGH PERFORMANCE, GEN 1

IAHP1

Fixture with Mounting Dimensions and Physical Information

Slide and Lock Mount [EXT-IAHP-SLM]

Lumen Code	Length	Height	Width	Weight	EPA (side @ 0°)
A1/B1/C1	22.68"	6.33"	10.60"	12 lbs.	33 ft ²
D1/E1/F1	26.38"	6.53"	13.70"	16 lbs.	37 ft ²
G1/H1	28.79"	6.53"	14.10"	25 lbs.	51 ft ²

Note: This mounting kit can adapt to 3"-4" round or min. 3" square pole.

Universal Pole Mount [EXT-IAHP-UPM]

Lumen Code	Length	Height	Width	Weight	EPA (side @ 0°)
A1/B1/C1	23.31"	6.70"	10.60"	13 lbs.	38 ft ²
D1/E1/F1	27.01"	6.70"	13.70"	17 lbs.	51 ft ²
G1/H1	28.82"	6.70"	14.10"	26 lbs.	56 ft ²

Note: This mounting kit can adapt to 4"-5" round or min. 3" square pole.

Adjustable Arm Mount [EXT-IAHP-ADM]

Adjustable Wall Mount [EXT-IAHP-WMA]

Lumen Code	Length	Height	Width	Weight	EPA (side @ 0°)
A1/B1/C1	25.20"	6.40"	10.60"	15.5 lbs.	40 ft ²
D1/E1/F1	28.01"	6.40"	13.70"	19.5 lbs.	44 ft ²
G1/H1	30.71"	6.40"	14.10"	24.5 lbs.	58 ft ²

Note: The arm mount [EXT-IAHP-ADM] can only adapt to min. 4" square pole.

Splitter Mount [EXT-IAHP-SFT]

Lumen Code	Length	Height	Width	Weight	EPA (side @ 0°)
A1/B1/C1	23.62"	3.07"	10.60"	15.5 lbs.	32 ft ²
D1/E1/F1	27.32"	3.07"	13.70"	19.5 lbs.	36 ft ²
G1/H1	29.93"	3.07"	14.10"	24.5 lbs.	50 ft ²

Note: This splitter can adapt to 3-3/8" version.

Yoke Mount [EXT-IAHP-YKM]

Lumen Code	Length	Height	Width	Weight	EPA (side @ 0°)
A1/B1/C1	16.83"	2.20"	10.60"	15.5 lbs.	42 ft ²
D1/E1/F1	21.94"	2.20"	13.70"	19.5 lbs.	35 ft ²
G1/H1	24.55"	3.00"	14.10"	24.5 lbs.	51 ft ²

Trunion Mount [EXT-IAHP-TRN]

Lumen Code	Length	Height	Width	Weight	EPA (side @ 0°)
A1/B1/C1	23.44"	2.80"	10.60"	12.5 lbs.	32 ft ²
D1/E1/F1	27.16"	2.80"	13.70"	16.5 lbs.	36 ft ²
G1/H1	28.98"	3.30"	14.10"	25.5 lbs.	50 ft ²

Note: This mounting kit can adapt to min 3.5" square pole.

MOUNTING HEIGHT: 28'-0"

800.660.9340 | [orionlighting.com](#)

© 2017 Orion Energy Systems, Inc. All rights reserved. The Orion logo, ISON™, AHP1™, HHP1™, and IAHHP1™ product names are registered trademarks of Orion Energy Systems. All other trademarks are the property of their respective owners.

THE HOME DEPOT

CHARLOTTESVILLE, VA

EXTERIOR LIGHT SPEC

11/16/2023

CHARLOTTESVILLE, VA

THE HOME DEPOT

2455 PACES FERRY ROAD, C-19
ATLANTA, GA 30339-4024
T: 770.433.8211

© MG2 Inc. All rights reserved. No part of this document may be reproduced in any form or by any means without permission in writing from MG2, Inc.

8444 Westpark Dr, Ste 120
McLean, VA 22102
703.564.8484
MG2.com

MG2

HDPCR0701

EXTERIOR LIGHT SPEC

DD40-01

10/16/2023 3:37:37 PM AutodesK Docs://HD-Charlottesville-WH-23-56 140-1A/HD-Charlottesville-WH-23-56 140-1A.rvt



THE HOME DEPOT

CHARLOTTESVILLE, VA

REFERENCE IMAGES

11/16/2023



CHARLOTTESVILLE, VA

THE HOME
DEPOT

2455 PACES FERRY ROAD, C-19
ATLANTA, GA 30339-4024
T: 770.433.8211

© MG2 Inc. All rights reserved. No part of this document may be reproduced in any form or by any means without permission in writing from MG2, Inc.

8444 Westpark Dr, Ste 120
McLean, VA 22102
703 564 8484
MG2.com



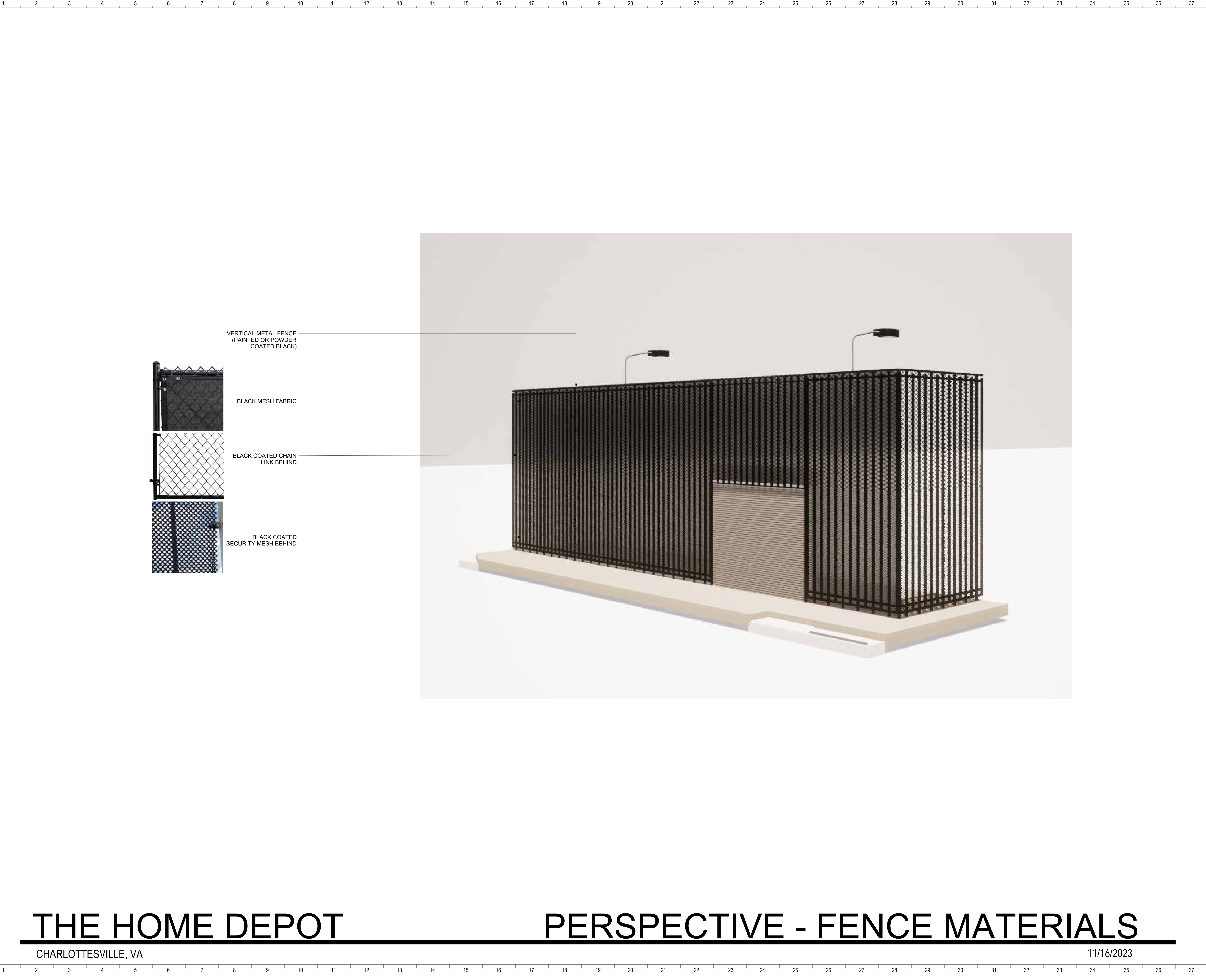
HDPCR0701

REFERENCE IMAGES

DD40-02

Autodesk Docs://HD-Charlottesville-VH-23-56140-1AHD-Charlottesville-VH-23-56140-1A.rvt 7/29/2023 12:14:00 PM

CC
BB
AA
Z
Y
X
W
V
U
T
S
R
Q
P
O
N
M
L
K
J
I
H
G
F
E
D
C
B
A



THE HOME DEPOT

PERSPECTIVE - FENCE MATERIALS

CHARLOTTESVILLE, VA

11/16/2023



CHARLOTTESVILLE, VA

THE HOME
DEPOT

2455 PACES FERRY ROAD, C-19
ATLANTA, GA 30339-4024

T: 770.433.8211

© MG2 Inc. All rights reserved. No part of this document may be reproduced in any form or by any means without permission in writing from MG2, Inc.

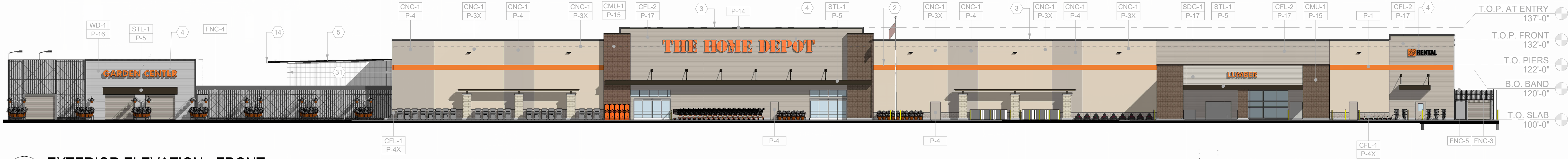
8444 Westpark Dr, Ste 120
McLean, VA 22102
703 564 8484
MG2.com

MG2

HDPCR0701

PERSPECTIVE - FENCE
MATERIALS

DD50-07



1 EXTERIOR ELEVATION - FRONT

SCALE: 1" = 20'-0"



FNC-2- Black Vertical Metal Fence*: To Be Located in Front of Black Expanded Metal Mesh Fence
(*Will Not Include Chain Link as Shown in Photo)

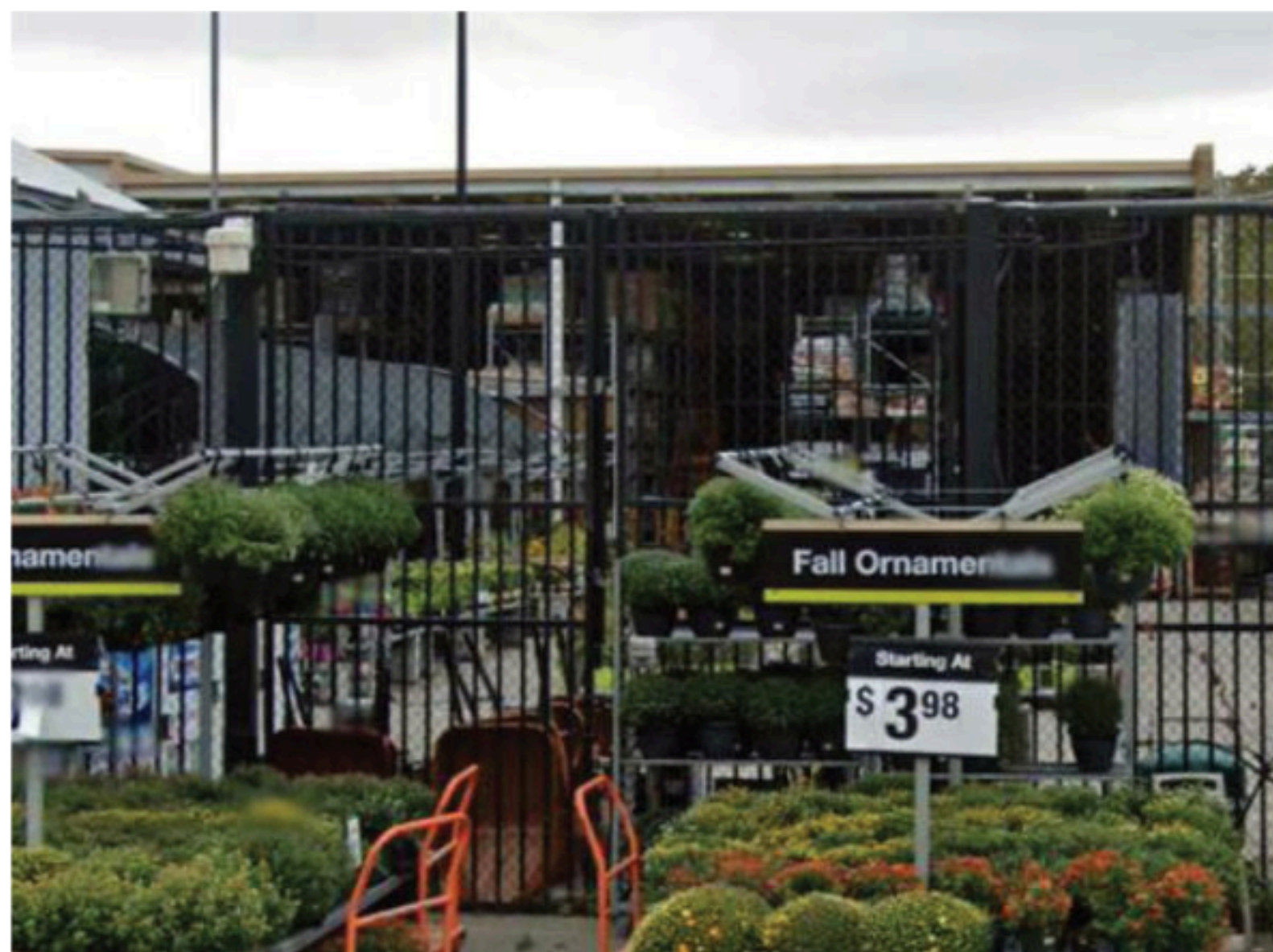


FNC-2- Enlargement of Black Expanded Metal Mesh Fence: To Be Located behind Vertical Metal Fence



FNC-2- Black Expanded Metal Mesh Fence: To Be Located behind Vertical Metal Fence

FENCE FNC-4: MATERIAL IMAGES



FNC-5- Black Vertical Metal Fence with Black Chain Link Behind

FENCE FNC-5: MATERIAL IMAGE

THE HOME DEPOT

CHARLOTTESVILLE, VA

EXTERIOR ELEVATION 1: FENCE MATERIAL IMAGES

11/16/2023



CHARLOTTESVILLE, VA

THE HOME
DEPOT

2455 PACES FERRY ROAD, C-19
ATLANTA, GA 30339-4024
T: 770.433.8211

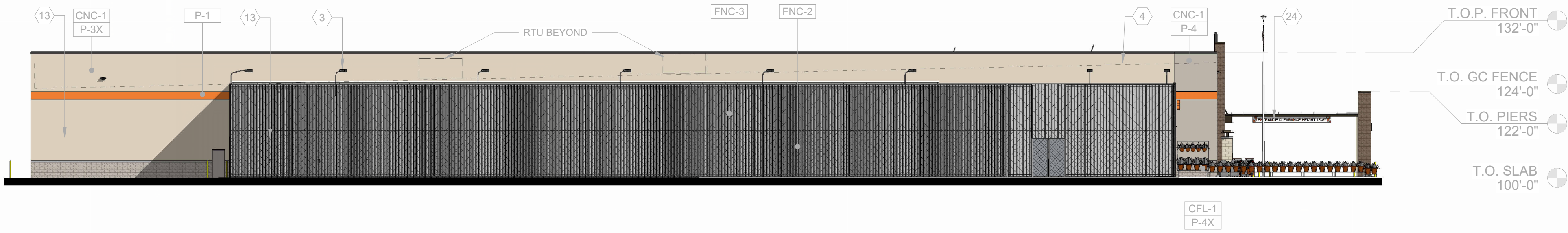
© 1992, Inc. All rights reserved. No part of this document may be reproduced in any form or by any means without permission in writing from MG2, Inc.

8444 Westpark Dr, Ste 120
McLean, VA 22102
703 564 8484
MG2.com

MG2

HDP0701

DD50-08



2 EXTERIOR ELEVATION - GARDEN CENTER
SCALE: 1" = 20'-0"



FNC-2- Black Vertical Metal Fence*: To Be Located in Front of Black Expanded Metal Mesh Fence
(*Will Not Include Chain Link as Shown in Photo)



FNC-2- Enlargement of Black Expanded Metal Mesh Fence: To Be Located behind Vertical Metal Fence



FNC-2- Black Expanded Metal Mesh Fence: To Be Located behind Vertical Metal Fence



FNC-2- Black Fabric Mesh*: To Be Located behind and attached to Black Expanded Metal Mesh Fence
(*Will Not Include Chain Link as Shown in Photo)

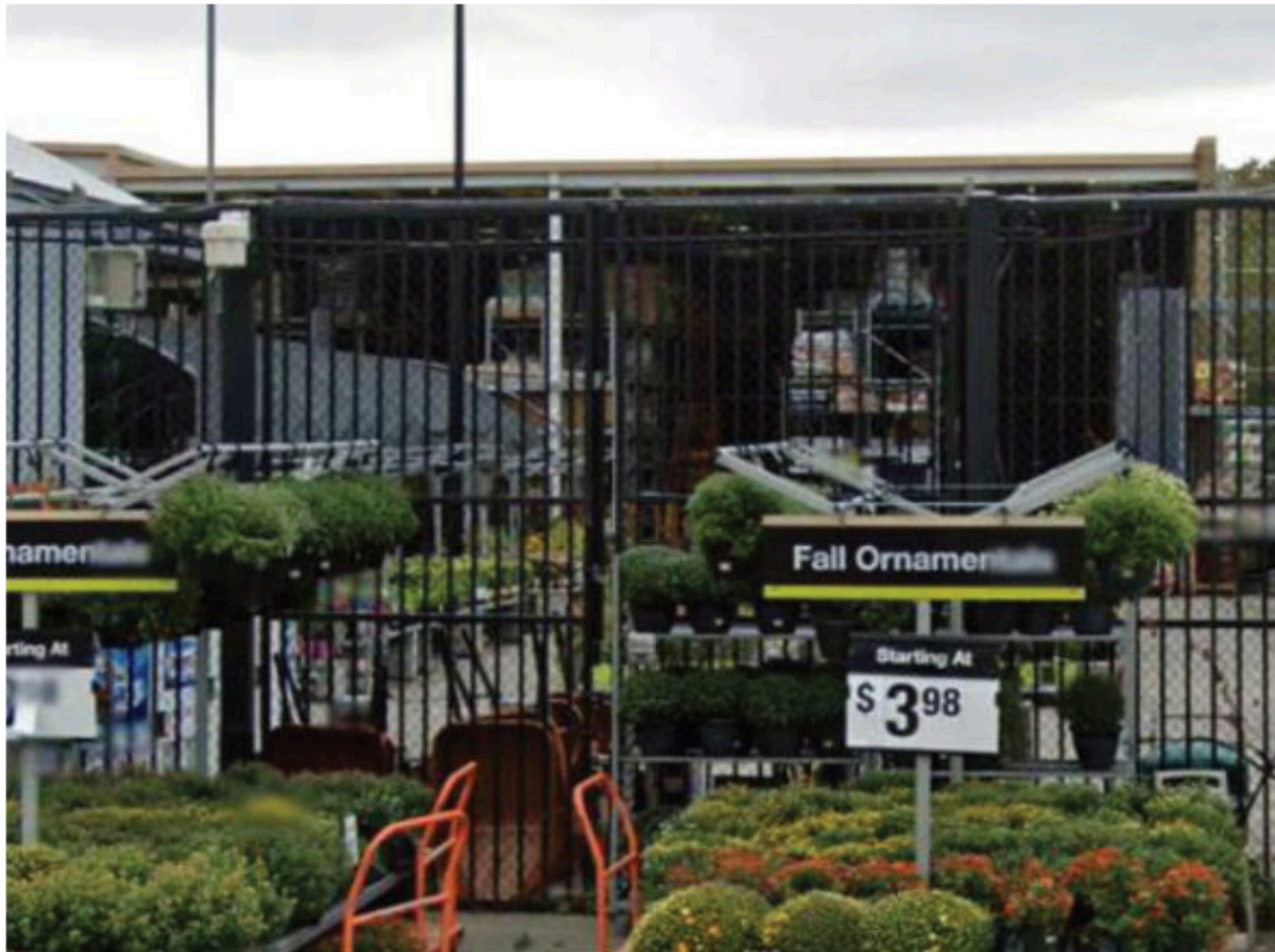
FENCE FNC-2: MATERIAL IMAGES



FNC-3- Vertical Metal Fence with Black Chain Link Fence Behind: Together To Be Located in Front of Black Fabric Mesh



FNC-3- Black Fabric Mesh: To Be Located behind and attached to Black Chain Link Fence



FNC-5- Black Vertical Metal Fence with Black Chain Link Behind

FENCE FNC-3: MATERIAL IMAGES

FENCE FNC-5: MATERIAL IMAGE



CHARLOTTESVILLE, VA

THE HOME DEPOT

2455 PACES FERRY ROAD, C-19
ATLANTA, GA 30339-4024
T: 770.433.8211

© 2022 The Home Depot. All rights reserved. No part of this document may be reproduced in any form or by any means without permission in writing from MG2, Inc.

8444 Westpark Dr, Ste 120
McLean, VA 22102
703 564 8484
MG2.com



HDPCR0701